

Fire Performance & Resistance to Premature Collapse No. LELFP0058-00 SWIFTS LADDER

Page 1 / 2

We, **Legrand Electric Limited**

have tested representative installed cable management products from the ranges below at the independent test laboratory MPA NRW, Erwitte, Germany to the following standard(s):

DIN 4102-12 - Fire behaviour of building materials and elements, **Part 12**: Fire resistance of electric cable systems required to maintain circuit integrity – Requirements and testing.

The DIN classifications achieved are dependent on the use of correctly specified & installed cables with intrinsic fire resistance.

trademark: *Swifts Cable Ladder Systems*,
Medium duty (Topaz), Heavy duty (Sapphire), Extra heavy duty (Emerald).

designation: *Cable ladder system*

Test Summary: 90 minutes, reaching a temperature of 1000°C.

Product Finish	DIN 4102-12 Fire Rating Classification	Installation Withstand (Resistance to Collapse)
G – galvanized	E30	>90mins
S – Stainless steel	E90	>90mins

manufactured by: Legrand Electric Limited
Great King Street North, Birmingham B19 2LF, United Kingdom.

These provisions are ensured by conformity to the following standards/specifications:

- EN 61537:2007 Cable management - Cable tray & cable ladder systems
- Section 6.1 products classified as metallic system components
- Section 6.2 products classified as non-flame propagating system components

Product(s) listed above are manufactured and supplied in accordance with our Certificates of Registration to both EN ISO 9001:2015 for our QMS and EN 14001:2015 for our EMS.

Every care has been taken in preparing this information and it is given in good faith. It does not, however, constitute a warranty nor imply any guarantee.



Birmingham, 14th February 2023
Place of Issue & Date

Eur Ing. **J. Wright** B.Eng C.Eng MIET
Authorised Signatory

THE GLOBAL SPECIALIST IN ELECTRICAL AND DIGITAL BUILDING INFRASTRUCTURES
LEGRAND ELECTRIC LIMITED, Great King Street North, Birmingham, B19 2LF
Tel : 0370 609 9000 Fax : 0370 608 9004

Fire Performance & Resistance to Premature Collapse No. LELFP0058-00 SWIFTS LADDER

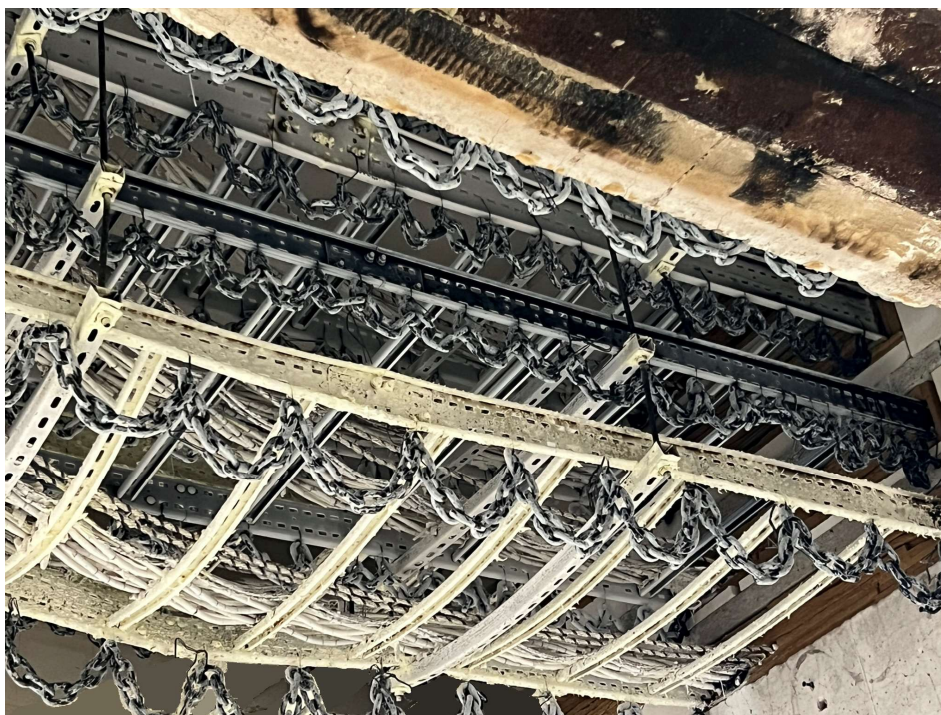
Page 2 / 2

Before and after pictures of Swifts ladder installed in fire test chamber:

Before:



After:



THE GLOBAL SPECIALIST IN ELECTRICAL AND DIGITAL BUILDING INFRASTRUCTURES
LEGRAND ELECTRIC LIMITED, Great King Street North, Birmingham, B19 2LF
Tel : 0370 609 9000 Fax : 0370 608 9004