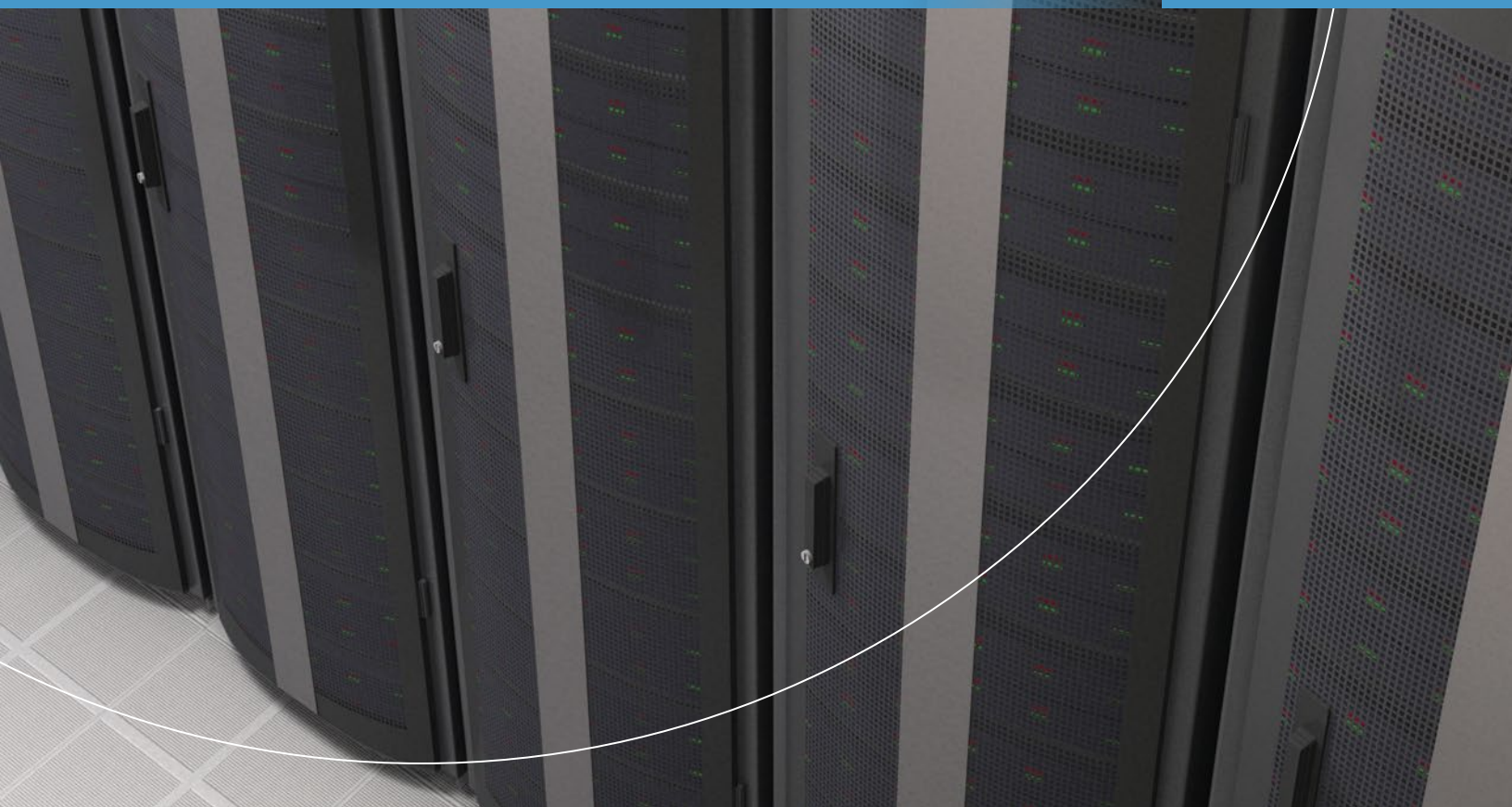




Flexible, Customizable  
Power Solutions for  
Mission Critical Success  
**MISSION CRITICAL BROCHURE**

**Starline**<sup>®</sup>  
A brand of **Legrand**





## The most critical decision, for mission critical facilities.



By their very nature, mission-critical and data center facilities are susceptible to downtime. With Starline Track Busway, power distribution has been revolutionized. This simple, versatile, and economical solution for supplying power is unique because Starline Track Busway can be tapped instantly at any location, without any downtime.

Having Starline Track Busway power your mission critical facilities gives you the advantage:

- Field-proven in data centers for over 30 years
- Plug-in units can be positioned at any point along the busway for maximum versatility
- Customization of plug-in units for any environment
- Easiest installation of plug-in units — just insert and turn
- No complicated mechanisms or levers
- Most reliable plug-in design with the least amount of electrical connections from busway to plug-in unit
- Interchangeable plugs for systems include: 250, 400, 600, 800, 1000 & 1200 T5
- Multiple busway feed options: end, top, center — for installation flexibility
- Available in lengths up to 10 or 20 feet (3 or 6 meters) for faster installation



## \$ Reduced Facility Construction Costs

- Labor savings mean installation is less expensive
- Eliminates costly change orders and outside labor costs for electrical specialists
- Lower cost of ownership

## 🕒 Faster Installation

- Building projects are up and running faster
- Add, remove or relocate power easily and quickly with no downtime

## 📶 Flexibility for the Future

- Plug-in units can be disconnected and connected without de-energizing the busway
- Requires no routine maintenance

## ✓ More Choices

- Customizable for any environment, space or power requirement
- Designed specifically for mission-critical and data center environments — T5 plug-in units are compatible with all T5 systems
- Scalable, reusable and customizable lengths, sizes, colors, and configurations to meet your unique specifications

## ✂ Field Services

- On-site support and system startup
- Ongoing support plans and warranty programs
- Metering services and integration
- Engineering studies
- Load bank testing and equipment rentals

# The power of simplicity.

With ever-increasing demands on IT infrastructure, data center owners and operators are challenged with keeping pace. One solution has been to increase the power density within the facility. This continual cycle of increasing power requirements for the critical equipment in the racks and cabinets has translated into more and more cables under the raised-floor or overhead.

But Starline Track Busway is a self-contained system, so there is no jungle of wires to obstruct air flow. This makes it one of the most energy-efficient systems you can buy in today's mission-critical environment. Starline is modular, build-as-you-need, and equipped for high-density electrical distribution. And it's designed and rated to meet and exceed the rigorous reliability demands and thermal requirements of mission-critical facilities.

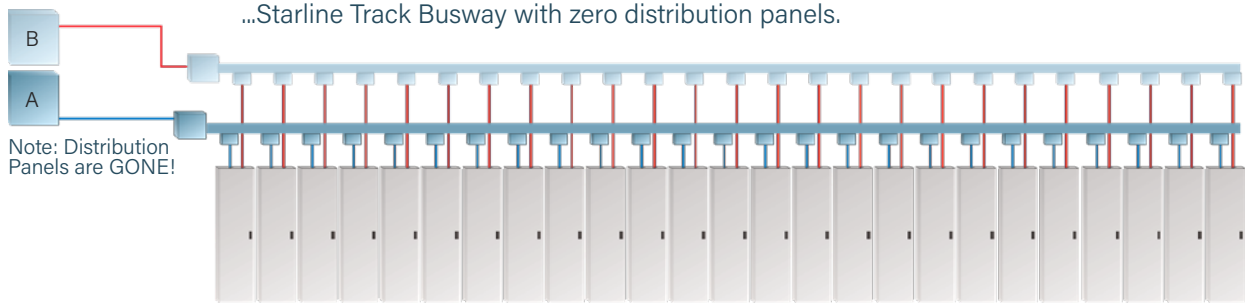
Starline also eliminates all the distribution panels associated with traditional systems, so changes and additions can be easily made without shutting off power. The all-in-one, self-contained plug-in units can also be inserted anywhere along the busway in almost any NEMA configuration and have fewer mechanical joints for reliability and efficiency.



Compare the confusion of traditional RPP/PDUs with whips under the floor to...



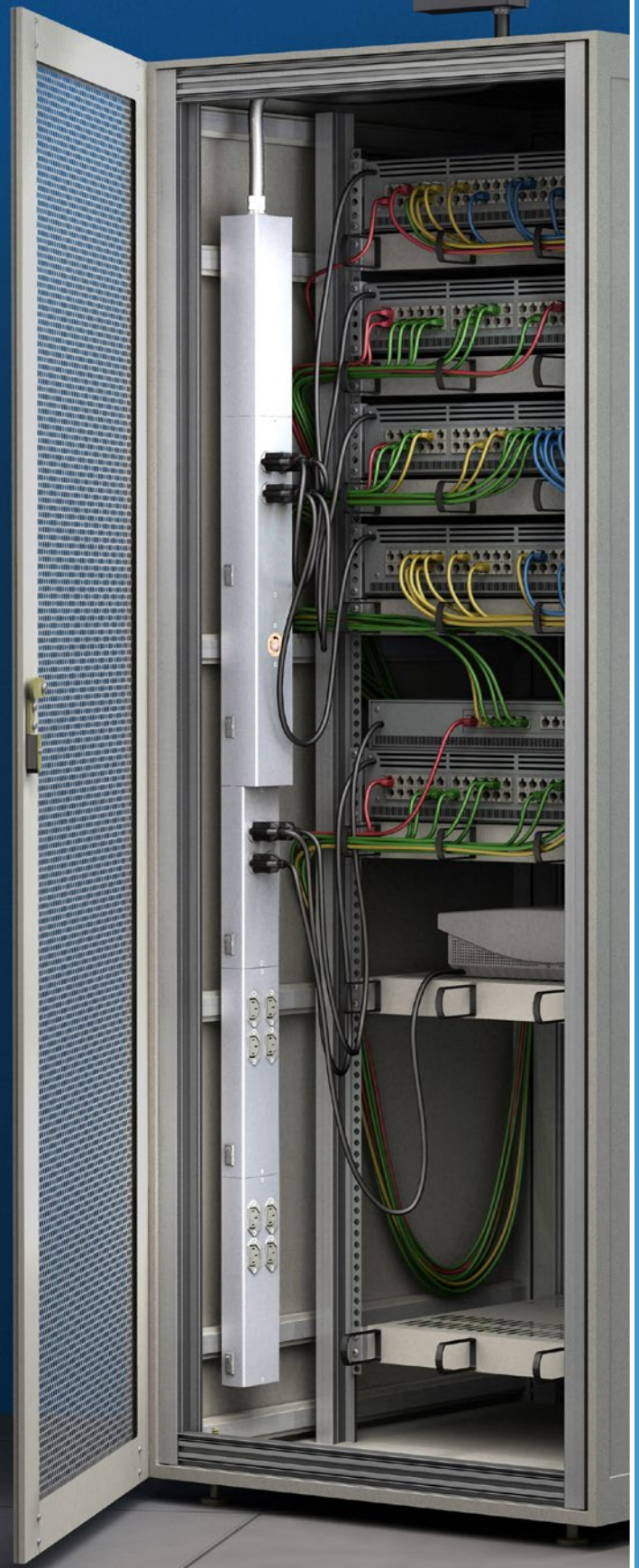
...Starline Track Busway with zero distribution panels.



SPECIFICATIONS		TRACK BUSWAY SYSTEM RATINGS				
Ampacity	225	250	400	600	800	1200
Rated Voltage	600 AC or DC	600 AC or DC	600 AC or DC	600 AC or DC	600 AC or DC	600 AC or DC
Rated Short Circuit Capacity	22kAIC	35kAIC	42kAIC	65kAIC	65kAIC	75kAIC
Conductor Type	Copper	Copper	Copper	Copper Contact	Copper Contact	Copper Contact
Frequency Ratings	50/60Hz	50/60Hz	50/60Hz	50/60Hz	50/60Hz	50/60Hz
Testing Criteria	UL857, IEC 61435	UL857, IEC 61435	UL857, IEC 61435	UL857, IEC 61435	UL857, IEC 61435	UL857, IEC 61435
Housing Material	Extruded Aluminum	Extruded Aluminum	Extruded Aluminum	Extruded Aluminum	Extruded Aluminum	Extruded Aluminum
System Weight Straight sections based on 4 pole	1ft (.3m) = 3.4lbs (1.54kg)	1ft (.3m) = 4.1lbs (1.86kg)	1ft (.3m) = 9.5lbs (4.31kg)	CU 1ft (.3m) = 19.6lbs (8.89kg) CU/AL 1ft (.3m) = 11.5lbs (5.52kg)	CU 1ft (.3m) = 19.6lbs (8.89kg) CU/AL 1ft (.3m) = 11.5lbs (5.52kg)	1ft (.3m) = 21lbs (9.53kg)
Support Distance	Max distance 10ft (3m)	Max distance 10ft (3m)	Max distance 10ft (3m)	Max distance 10ft (3m)	Max distance 10ft (3m)	Max distance 10ft (3m)
Available Lengths	Up to 20ft (6m)	Up to 20ft (6m)	Up to 20ft (6m)	Up to 10ft (3m)	Up to 10ft (3m)	Up to 10ft (3m)

# Cabinet Busway Series offers flexible power for server cabinets.

The Cabinet Busway Series was specifically developed to offer flexible power that can accommodate high-density power requirements within server cabinets. The series can provide up to 3-phase, 60 amp power through 480Vac. Installed in your cabinet, or rack, each unit comes with a corded plug and modular backplane where you have the ability to select the plug-in units to meet the equipment needs of servers, storage arrays, network gear, or other devices installed in the cabinet. The Cabinet Busway Series also offers optional metering functionality for those interested in monitoring and improving their energy efficiency.





## Real-time monitoring for peak efficiency.

Because of the market's growing need for energy efficiency, energy monitoring systems are more critical than ever. The Starline Critical Power Monitor (CPM) offers an enhanced monitoring package that will allow you to monitor, integrate and display more data center power information easily and reliably.

### The Starline CPM offers:

- End feed and branch circuit models
- Display and non-display versions
- Wired Ethernet and serial communications are standard, optional 802.11n Wi-Fi connectivity
- Ability to use both serial Modbus and Ethernet-based protocols simultaneously
- Daisy-chain Ethernet available
- Optional temperature monitoring
- Both Vac and DC versions available



### TEMPERATURE MONITOR

Real-time temperature data

Eliminates need to periodically IR scan

Data for end user analysis via webpage

### CORDED CPM

Add metering capabilities to your existing installation

No modifications needed to existing infrastructure

### RETROFIT CPM

Cost effective option for the addition or upgrade of existing Starline systems in the field

Utilize existing end feed and/or installed plug-in units

### FACTORY UPGRADE

Add or upgrade metering capabilities to an existing installation

Implementation can be accomplished on-site

STARLINE SERVICE OFFERINGS				
Choice of Extended Warranty or Enhanced: Silver, Gold or Platinum Service Plans	Extended 1, 2, 3, 4 years	Silver 1, 2, 3, 4 years	Gold 1, 2, 3, 4 years	Platinum 2, 3, 4 years
Repair or replacement of defective parts throughout life of service agreement	▪	▪	▪	▪
24/7 technical support hotline	▪	▪	▪	▪
Visual inspection of meters		▪	▪	▪
Visual inspection of all joints for visible gaps		▪	▪	▪
Update firmware and verify all Starline CPMs		▪	▪	▪
Includes travel and expenses		▪	▪	▪
One (1) service site visit per year		▪		
Two (2) service site visits per year			▪	▪
Thermal imaging of all plug-in units			▪	▪
Thermal imaging of all Busway joints			▪	▪
Thermal imaging of all end feed units			▪	▪
Detailed and fully executed thermography report			▪	▪
Online portal for test reports & documentation			▪	▪
Spare parts inventory management program				▪

**LOAD BANK TESTING AND EQUIPMENT RENTALS**

Factory trained and certified technicians will load bank test and commission busway

Reliable source for load bank rental equipment delivered to site when you need

**ENGINEERING STUDIES (US ONLY)**

Allow for compliance with safety standards

Engineers will provide facility electrical studies, recommend corrective actions or confirm your systems reliability and compliance with government and safety requirements

**METER SERVICES**

Certified technicians will safely and efficiently program meters

Technicians can integrate your CPM devices so that you can focus on operational goals

**ON-SITE INSTALLATION SUPPORT**

Confirm equipment delivery and quality

Inspection of proper system installation

Contractor training on best practices for installation

**STARTUP AND SYSTEM CERTIFICATION**

Helps mitigate issues and risks associated with startup by proactively inspecting, testing and reporting on Starline products

Upon successful completion of system startup, Starline's standard manufacturer's warranty will be automatically extended in duration

**ON-SITE PRODUCT TRAINING**

Proven course curriculum is thorough and effective meeting Starline's rigorous installation and operational standards

Improve operator safety and learn best practices to care for your product

Starline, a brand of Legrand, has been a leader in power distribution since 1924. The company's founders led the way for many new technologies in the power distribution equipment industry. Today, Starline continues to pave the way for safer, more innovative and more reliable electrical power distribution systems. Visit [StarlinePower.com](http://StarlinePower.com) to learn more about our flexible power solutions.

# Starline®

A brand of  legrand

North American Headquarters  
168 Georgetown Road | Canonsburg, PA 15317 | USA | +1 800-245-6378

UK & Northern Europe  
Unit C Island Road | Reading RG2 0RP | UK | +44 (0) 1183-043180

Asia Pacific Region  
16D Tuas Avenue 1 | #04-60/62 | JTC Space @ Tuas | Singapore 639536 | +65 6950-1247

[StarlinePower.com](http://StarlinePower.com)

+1 724-597-7800 | +1 800-245-6378

04/22 F0000005

