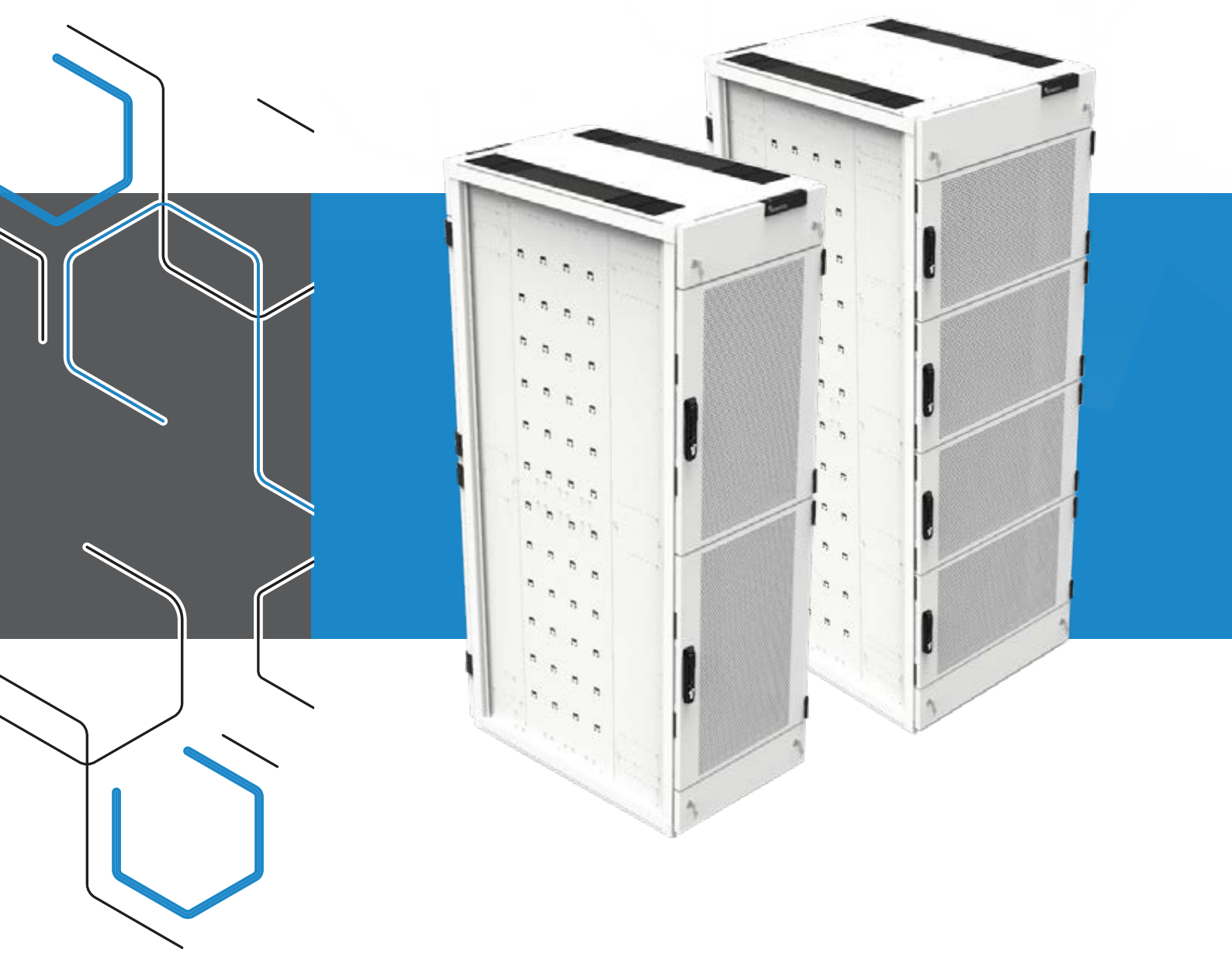


NEXPAND

COMPARTMENTALISED COLOCATION CABINETS



NEXPAND

COMPARTMENTALISED COLOCATION CABINETS

The **Nexpand compartmentalised colocation cabinets** are perfectly suited for combining multiple end customers in one cabinet while keeping them safely separated. We offer a choice between a two and four times compartmentalised cabinet. The compartments are completely individualized with the use of

fixed plateaus, all have separate and protected data and power cable ducts. There is space reserved at the top and bottom of the cabinet for the data center owner (the facility compartments) which can also feature VMRs inside. The colocation cabinets can be configured in varying heights, widths and depths.

| SPECIFICATIONS | | | | | |
|----------------------------|--------------------|--|--------------|---------------|---------------|
| Dimensions: | | Standard | | On request | |
| Height | U | 47 (2/4 CMPT) | 42 (2 CMPT) | 47 (2/4 CMPT) | 52 (2/4 CMPT) |
| Height | mm | 2200 | 1978 | 2200 | 2422 |
| Width | mm | 600 or 800 | 600 or 800 | 600 or 800 | 600 or 800 |
| Depth | mm | 1200 | 1000 or 1200 | 1000 or 1200 | 1000 or 1200 |
| General: | | | | | |
| Colour | | RAL 9003 (white) / RAL 9005 (black) | | | |
| Static load capacity | kg | 1000 - evenly distributed as maximum load | | | |
| Earthing | | Fully earthed with central earthing point | | | |
| IP grade | | IP20 | | | |
| Standards compliancy | | IEC-60297-3-100 | | | |
| | | IEC-61587-1 | | | |
| | | Static Load ST1, NL4 Environmental: C1, A1 | | | |
| Interior: | | | | | |
| 19-inch profiles | pcs | Steel, powder coated Two times compartmentalised cabinet: 8 pieces Four times compartmentalised cabinet: 16 pieces | | | |
| Adjustability (depth) | | Adjustability in steps of 20mm | | | |
| U marking | | 1st U at bottom of every compartment | | | |
| Position, front profiles | | Pre-mounted 80/200 mm (1000/1200 mm deep) from the front of the door | | | |
| Position, rear profiles | | Pre-mounted at 740 mm pitch | | | |
| Compartments | | | | | |
| | 42 U | 2 CMPT - 18 U + Fac.CMPT - 2,7 U | | | |
| | 47 U | 2 CMPT - 21 U + Fac.CMPT - 2,2 U | | | |
| | 52 U | 2 CMPT - 23 U + Fac.CMPT - 2,7 U | | | |
| | 47 U | 4 CMPT - 10 U + Fac. CMPT - 3 U | | | |
| | 52 U | 4 CMPT - 11 U + Fac. CMPT - 3,5 U | | | |
| | | Facility compartment at top and bottom of cabinet | | | |
| Cable ducts | mm | 80 x 40 (depth x width) in 600 width cabinets | | | |
| | mm | 80 x 80 (depth x width) in 800 width cabinets | | | |
| | | Start +20 mm off-center from front of cabinet | | | |
| Frame: | | | | | |
| Material | | Aluminium extrusions | | | |
| Finishing | | Powder coated | | | |
| Front/rear closure: | | | | | |
| Front door | | 80% perforated single door | | | |
| Rear door | | 80% perforated single door | | | |
| Security | | 2-Points Fix-Easy combination handle with key override | | | |
| Material | | Steel | | | |
| Finishing | | Powder coated | | | |
| Hinges | | Reversible and fast replacement • Max. rotation degree 260° | | | |
| Left/right closure: | | | | | |
| Material | | Steel | | | |
| Finishing | | Powder coated | | | |
| Roof: | | | | | |
| Fixed layout | | Front/Rear with cover panels per 200/300 mm (1000/1200 mm deep) | | | |
| Modularity | | Modular inserts per 100mm. Brush predefined option | | | |
| Inserts | | | | | |
| | Cover panels | Possibility to 'break' 1x200 mm to 2x100 mm • Material: ABS • Flammability: UL 94 V-0 | | | |
| | Cable entry guides | Material: ABS • Flammability: UL 94 V-0 | | | |
| | Brushes | Material: Polyamide 6 • Flammability: UL 94 HB | | | |



The **Nexpond compartmentalised colocation cabinets** are completely configurable, there is also a predefined portfolio covering our high-runner dimensions. These configurations feature a non-airtight interior and isolated cable ducts, side panels can be ordered separately.

SIDE PANEL

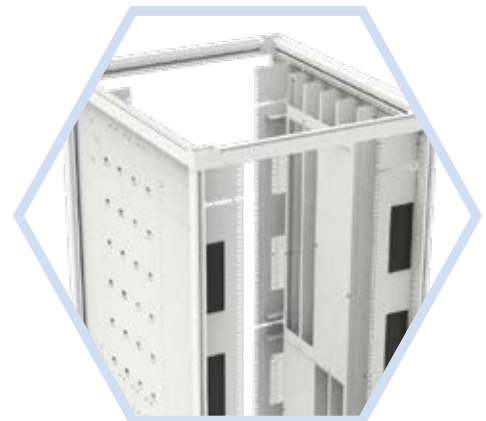
A side panel is specially used for end-of-row applications, this makes even more sense for colocation solutions since sides are closed by default due to the colocation construction. Side panels provide you with a high quality aesthetic finishing. Full-height side panels are compatible, equipped with quarter turn square locks.

AIRFLOW MANAGEMENT

Airflow management is the efficient guidance of the various airflows in data centers to keep the cold and hot air separated optimally. To optimize that cooling process, air leakage and recirculation must be minimized by using an airtight colocation interior. These can be chosen when configuring your colocation solution, not included in the predefined configurations offered. Even when adjusting the 19" profiles the air tightness is guaranteed. The 800mm wide side-skirts feature cable throughput possibilities in the area next to the 19" profiles.

CABLE MANAGEMENT

Each compartment has its own vertical cable ducts to ensure separated cable routing. Both connectivity and power can be routed through a dedicated cable duct. A cabinet with 4 compartments shall have 1 cable duct on each side. A cabinet with 2 compartments shall have 2 cable ducts on each side for each user.



NEXPAND

COMPARTMENTALISED COLOCATION CABINETS

General features

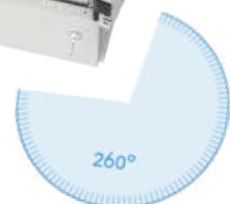
800 mm Colocation cabinet
with 4 compartments
and 2 facility compartments

FRAME

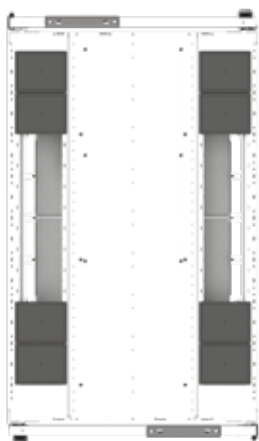
- Light and solid aluminium frame with the capability to handle 1000 kg of static load.
- VMRs feature great flexibility in the depth direction in steps of 20mm.
- For 1000 mm deep cabinets the front VMRs can be placed in a range of 80 to 180 mm from the front door and ensure 740 mm distance with rear VMRs.
- For 1200 mm deep cabinets the front VMRs can be placed in a range 140 to 240 mm from the front door for cold aisle containment configurations and 100 to 240 mm for hot aisle containment configurations, and ensure 740 mm distance with rear VMRs.
- Threaded mounting rails in width, depth and height direction enable stepless adjustability for most accessories.
- Nearly all accessories and components accessible from inside of the cabinet.
- Next-level energy efficiency is possible with the use of airtight colocation interior and VMRs.



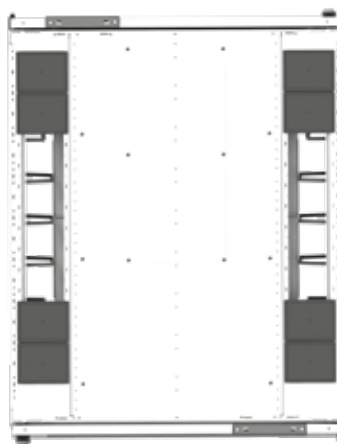
Black and white 600 mm colocation cabinets with 2 compartments and 2 facility compartments



Door can open 260° in case of stand-alone cabinets.



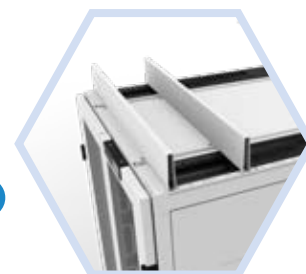
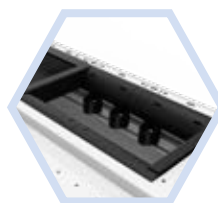
Roof of 600 mm wide colocation cabinet



Roof of 800 mm wide colocation cabinet

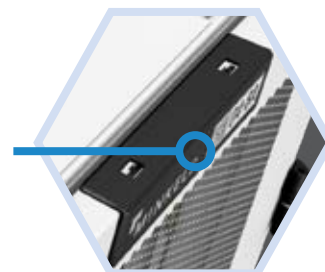
ROOF

- Solid platform for installation top of cabinet infrastructure.
- Roof inserts follow a multiple of 100 mm.
- Nearly full-depth cut-out.
- Optimal accessibility for cabling right on top of cable duct.
- Cover plates to provide best airtight solution by default where cable ducts are not located.
- Cable pull relief available.
- Cable dividers on top of cabinet follow the same modularity as the inserts.
 - Extendable per cabinet to create a duct system.
 - Cover plates and end covers available for dust/debris protection and airtight solutions.
 - Powder coated in same color as cabinet.
- Roof is compliant with hot/cold aisle containment.



DOOR

- Predefined position for identification (Note: label plate is not on the door, but on top panel). Place serial numbers, barcodes or QR codes to code and personalize your cabinets.
- Clean and minimalistic design.
- Easy door installation.
- High level perforation.
- Sizes for 2 and 4 compartments.
- Full integration of the locking mechanism and cabling.
- High level access security.
- Support of different types of locking possible.
- Replacement of locking through detachable cover plate rear.
- Door reversible (left/right hinged).
- Door can open 165° in case of bayed cabinets.
- Door can open 260° in case of stand-alone cabinets.



NEXPAND

COMPARTMENTALISED COLOCATION CABINETS

Unique features

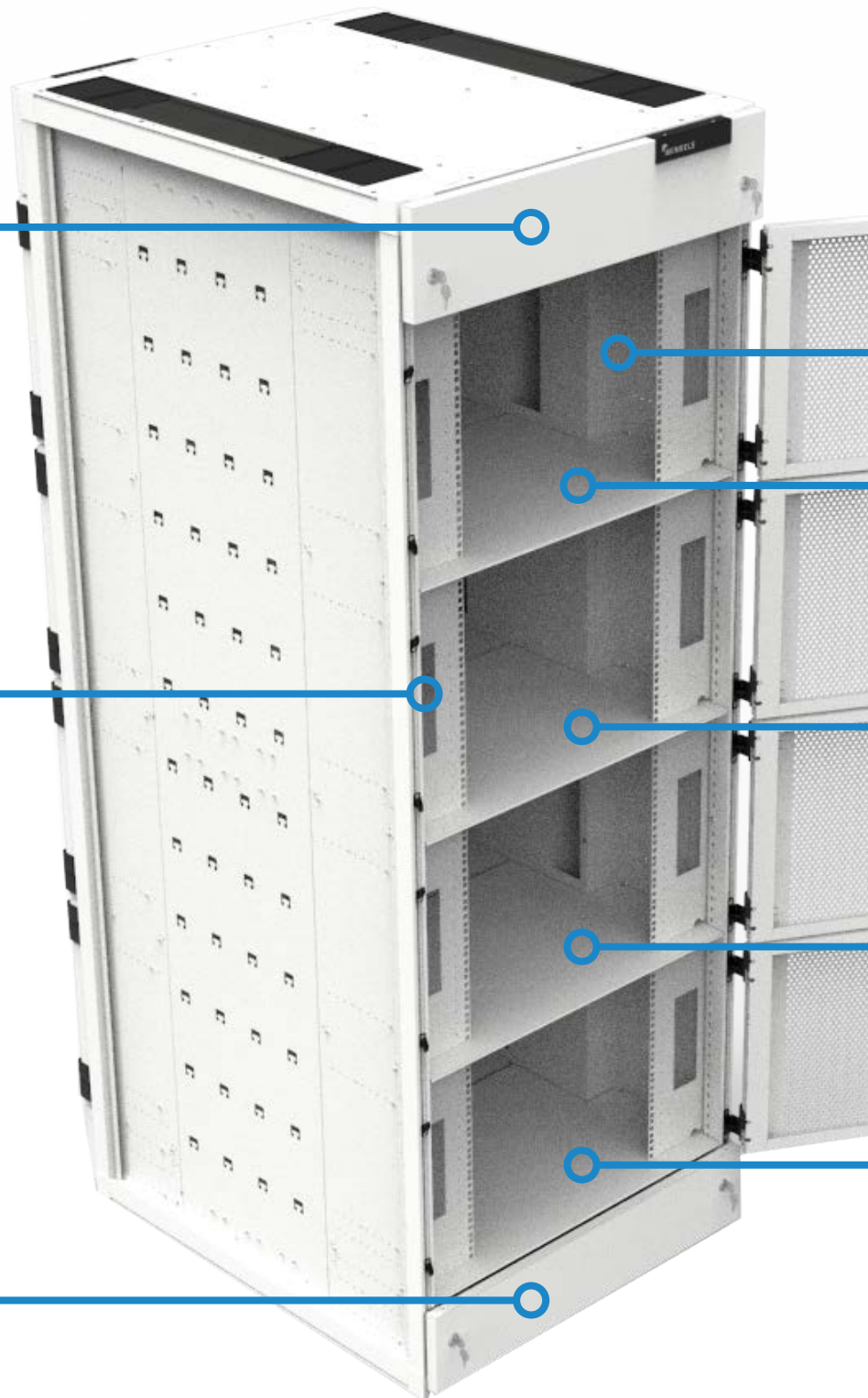
FACILITY COMPARTMENT

*800 mm Colocation cabinet
with 4 compartments and
2 facility compartments*

COLOCATION CABINETS WITH AIRTIGHT INTERIOR

- Best in class air tightness.
- Sealing cabinet-to-cabinet is optional.
- Sealing cabinet-to-floor and cabinet-to-aisle containment is optional
- Various VMRs options:
 - Airtight VMRs do not allow cable management accessories on the VMR.
 - Non-irtight VMRs allow cable management accessories.
- Brushes, foam or cover plates can be used to upgrade the airtightness of the solution where cables are not present.

FACILITY COMPARTMENT



SIDE PANELS IN COLOCATION CABINETS

- Side panels are used when stand-alone is preferred or when the cabinet is placed at the end of the row.
- Earthing connection is established when locking the panels.
- Full-height powder coated side panels



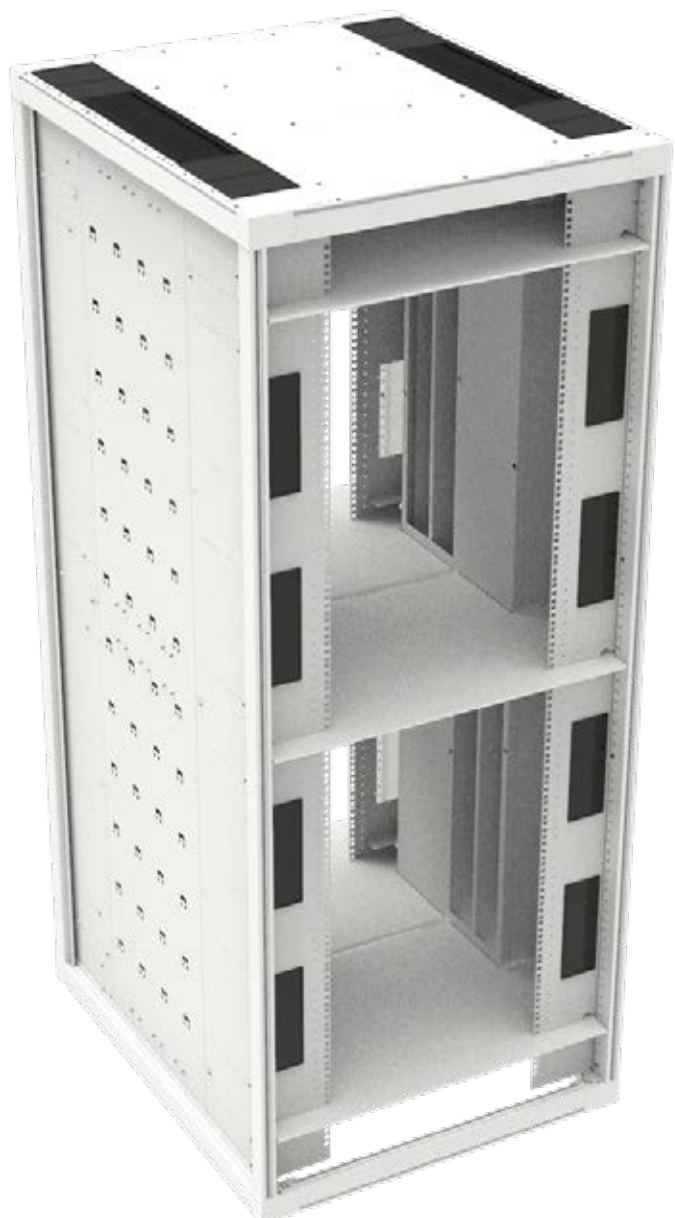
INTEGRATED CABLE MANAGEMENT

COMPLETELY SEPARATED COMPARTMENTS - HIGH LEVEL OF SECURITY

CABLE DUCT IN COLOCATION CABINETS

- Fixed position inside the frame.
- Enclosed and individual solution for each customer.
- Multifunctional cable duct to organise your cabling
 - Using tie-wraps and/or velcro

*800 mm Colocation cabinet
with 2 compartments and
2 facility compartments*



NEXPAND

Colocation cabinets

▪ 2 Compartments

SPECIFICATIONS OF THE COLOCATION CABINET

- Standard 19" profiles
- Leveling feet
- Baying set is included
- The cut-out on the left and right side is covered with brushes for cable entry, the rest is filled with blind plates
- Doors are provided with blind stops
- Default hinge direction is on the right side
- Side panels are not included



White 600 mm colocation cabinet with 2 compartments and 2 facility compartments



Black 600 mm colocation cabinet with 2 compartments and 2 facility compartments



White 800 mm colocation cabinet with 2 compartments and 2 facility compartments



Black 800 mm colocation cabinet with 2 compartments and 2 facility compartments

| Standard portfolio | | | | | |
|------------------------|--------|------------|------------|---------------------|---------------------|
| Number of compartments | Height | Width (mm) | Depth (mm) | Black (RAL 9005) | White (RAL 9003) |
| 2 | 47 U | 600 | 1200 | B1209-061247-160820 | B1204-061247-160819 |
| | | 800 | | B1209-081247-160817 | B1204-081247-160818 |



Applicable to the standard portfolio
Transport time not included

On www.minkels.com you will find the technical data sheets and brochures containing extensive information about the different Nexpan cabinets. If you do not find the information you are looking for in these datasheets and brochures, do not hesitate to contact us. We will be happy to help you! You can find the contact details on the back side of this brochure.

Colocation cabinets

▪ 4 Compartments



White 800 mm colocation cabinet with 4 compartments and 2 facility compartments



Black 800 mm colocation cabinet with 4 compartments and 2 facility compartments

| Standard portfolio | | | | | |
|------------------------|--------|------------|------------|---------------------|---------------------|
| Number of compartments | Height | Width (mm) | Depth (mm) | Black (RAL 9005) | White (RAL 9003) |
| 4 | 47 U | 800 | 1200 | B1409-081247-160816 | B1404-081247-160815 |



Applicable to the standard portfolio
Transport time not included



FOLLOW US ON



minkels.com



youtube.com/c/minkelshq



twitter.com/minkels_hq



facebook.com/minkels



linkedin.com/company/minkels



MINKELS HEADQUARTERS & INTERNATIONAL

Eisenhowerweg 12

P.O. Box 28

5460 AA Veghel

t. +31 (0)413 311 100

info@minkels.com